

DETERMINATION OF PRAZOSIN AND SIMVASTATIN IN LANDFILL LEACHATE USING LIQUID CHROMATOGRAPHY-TIME OF FLIGHT-MASS SPECTROMETRY

(Penentuan Prazosin dan Simvastatin di dalam Larut Lesap Menggunakan Kromatografi Cecair-Masa Penerbangan-Spektrometri Jisim)

Zainab Haider Mussa^{1,2}, Fouad Fadhil Al-Qaim^{1,3*}, Md Pauzi Abdullah^{1,4}, Mohamed Rozali Othman^{1,4}

¹*School of Chemical Sciences and Food Technology, Faculty of Science and Technology, Universiti Kebangsaan Malaysia, 43600 UKM Bangi, Selangor, Malaysia*

²*Faculty of Pharmacy*

³*Department of Chemistry, Faculty of Sciences for Women, University of Babylon, PO Box 4, Hilla, Iraq*

⁴*Centre for Water Research and Analysis (ALIR), Faculty of Science and Technology, Universiti Kebangsaan Malaysia, 43600 UKM Bangi, Selangor, Malaysia*

*Corresponding author: fouadalkaim@yahoo.com

Received: 13 January 2016; Accepted: 27 March 2016

Abstract

Human pharmaceuticals have been shown to occur in considerably high amounts in sewage treatment plant (STP) effluents and surface waters. So far there is no data available on the occurrence of prazosin and simvastatin in leachate sample in Malaysia. Thus, this study is the first report to analysis of prazosin and simvastatin in leachate samples by using solid phase extraction-liquid chromatography-time of flight-mass spectrometry (SPE-LC-TOF-MS). The proposed method included isolation and reconstitute procedure. The linearity range was achieved at 1.5 - 3000 µg/L and 0.8 - 125 µg/L for prazosin and simvastatin, respectively with a determination coefficient (R^2) > 0.99. The limit of quantification (LOQ) for prazosin and simvastatin was calculated at 2.1 and 0.5 µg/L in deionised water (DIW), meanwhile it was recorded at 3.5 and 2.4 µg/L for prazosin and simvastatin in effluent sample, respectively. Two pharmaceutical compounds were detected in the leachate samples: prazosin and simvastatin at concentrations levels of 3850 and 415 ng/L, respectively.

Keywords: prazosin, simvastatin, leachate, solid phase extraction, pharmaceutical pollution

Abstrak

Farmaseutikal manusia telah hadir di dalam effluen loji sisa rawatan dan air permukaan. Sehingga kini, tiada data kajian yang merekodkan kehadiran prazosin dan simvastatin dalam sampel larut lesap di Malaysia. Maka, kajian ini merupakan laporan pertama tentang analisis terhadap prazosin dan simvastatin di dalam sampel larut lesap menggunakan pengekstrakan fasa pepejal-kromatografi cecair-masa penerbangan-spektrometri jisim (SPE-LC-TOF-MS). Kaedah yang dibangun meliputi langkah pemisahan dan nilai isian semula. Julat kelinearan dicapai antara 1.5 - 3000 µg/L dan 0.8 - 125 µg/L masing - masing bagi prazosin dan simvastatin dengan nilai pekali (R^2) > 0.99. Had kuantifikasi (LOQ) bagi prazosin dan simvastatin dihitung pada aras 2.1 dan 0.5 µg/L di dalam air ternyahion manakala direkod masing - masing pada aras 3.5 dan 2.4 µg/L di dalam sampel effluen. Dua jenis sebatian farmaseutikal ini dikesan in dalam sampel larut lesap pada aras kepekatan masing - masing adalah 3850 and 415 ng/L.

Kata kunci: prazosin, simvastatin, larut lesap, pengekstrakan fasa pepejal, pencemaran farmaseutikal

Introduction

The occurrence of pharmaceutical in the aquatic environment has been recognized as one of the emerging issues in environmental chemistry. The widespread presence in the aquatic environment can be explained by their extensive use in medical practice and incomplete removal in wastewater treatment plants (WWTPs) [1]. These compounds present in the environment at trace levels (ng/L - µg/L), hence it is known as micro pollutants. For this reason, in the past century, their detection was infeasible due to lack of sophisticated analytical technique. In recent years, advancements in analytical methods have contributed to the detection of over 100 active agents in pharmaceutical products in different environmental matrices [2, 3]. Scientific research studies conducted in Malaysia and worldwide have reported widespread occurrence of pharmaceuticals in surface water, influent and effluent sewage treatment plants and hospitals [4 – 7]. The reason may related to several ways which are participated to introduce the pharmaceuticals to surface water such as insufficiently treated sewage effluents, production residues, improper disposal of expired medications and unused drugs and accidental spillage during manufacturing and distribution [8].

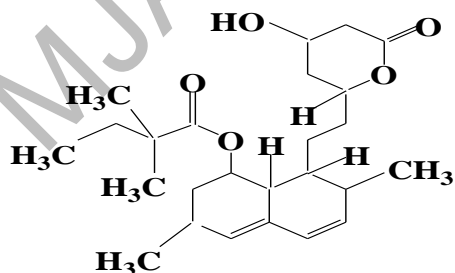
In leachate samples, the detection of pharmaceuticals has never been studied except few reported papers [9, 10]. Landfills may be sources of a large number of organic compounds known as emerging contaminants (ECs and/or EDCs) such as pharmaceuticals, pesticides, fertilizers and others. Pharmaceutical compounds may occur in concentration of approximately 8.1 mg/kg in typical municipal solid waste. In landfills, these compounds may be degraded/metabolized, adsorbed to solids or dissolved in leachate. Release of these chemicals in the environment may affect public health on humans, animals and ecosystem.

Liquid chromatography - tandem mass spectrometry [LC-MS/MS] is one of the most popular analytical methods used to analyse pharmaceutical residues in water samples due to its versatility, specificity and selectivity. Other different approaches have been tried, including gas chromatography-mass spectrometry (GC-MS), voltammetry, potentiometry and LC-Uv as reviewed in previous studies [11, 12]. In Malaysia, simvastatin has been detected less than limit of detection (LOD) [13] while in Canada; it has been detected in 0.001 µg/L [14]. The differences in concentrations of simvastatin in treated wastewaters between different countries generally reflect different usage patterns, per-capita water consumption, and treatment processes.

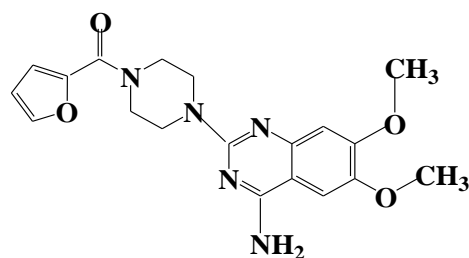
The aim of this study is to determine the amount of prazosin and simvastatin in raw leachate, post-biological and post-charcoal adsorption treatment using liquid chromatography-time of flight/mass spectrometry.

Materials and Methods

Prazosin (PRZ) (CAS no.19237-84-4), simvastatin (SMV) (CAS no. 79902-63-9) were obtained from Sigma-Aldrich (USA). Figure 1 shows the chemical structure of these pharmaceuticals with molecular weight. Deionized water (DIW) used was supplied by EASYPure RODI (USA). Acetone, acetonitrile and methanol (HPLC grade) were purchased from Sigma-Aldrich (USA). Formic acid (FA) was supplied by Merck (Germany). Methyl Tertiary Butyl Ether (MTBE) was supplied by J. T. Baker (USA). The cartridges used for solid phase extraction (SPE) were (Oasis HLB 3 cm³, 60 mg purchased from Waters (USA).



Simvastatin (SMV), 418 g/mol



Prazosin (PRZ), 383 g/mol

Figure 1. Chemical structures of the studied compounds

Site description and sampling activities

The leachate samples namely raw, biological and physico-chemical treated samples used in this study were collected from Jeram sanitary landfill leachate. Jeram sanitary landfill leachate is located in an oil palm plantation near Kuala Selangor Malaysia as shown in Figure 2. It is roughly rectangle in shape and occupied 64.7 hectares. Jeram sanitary landfill has been in operation by Worldwide Holdings since January 2007. This landfill is designed with a capacity to hold 6 million tons of waste. Currently, approximately 2000 tons of solid waste is disposed of at the landfill every day, and to date 4.1 million tons of waste has been added to the landfill [15].

All samples were collected in 1L amber glass bottles with Teflon lined caps to ensure sample integrity using a stain steel bucket previously rinsed with distilled water and methanol. The bottles head spaces were kept to a minimum by filling the bottles to the top. The bottles were rinsed once with sample and filled to the top on the second sampling. Disposable gloves were used to prevent any personal care products from contaminating the sample bottles, then immediately transported to the laboratory. Samples were filtered through a 0.7 μ m GF/G filter from Whatman (UK) to remove suspended solids and stored at 4 °C in order to keep the wastewater characteristics unchanged.

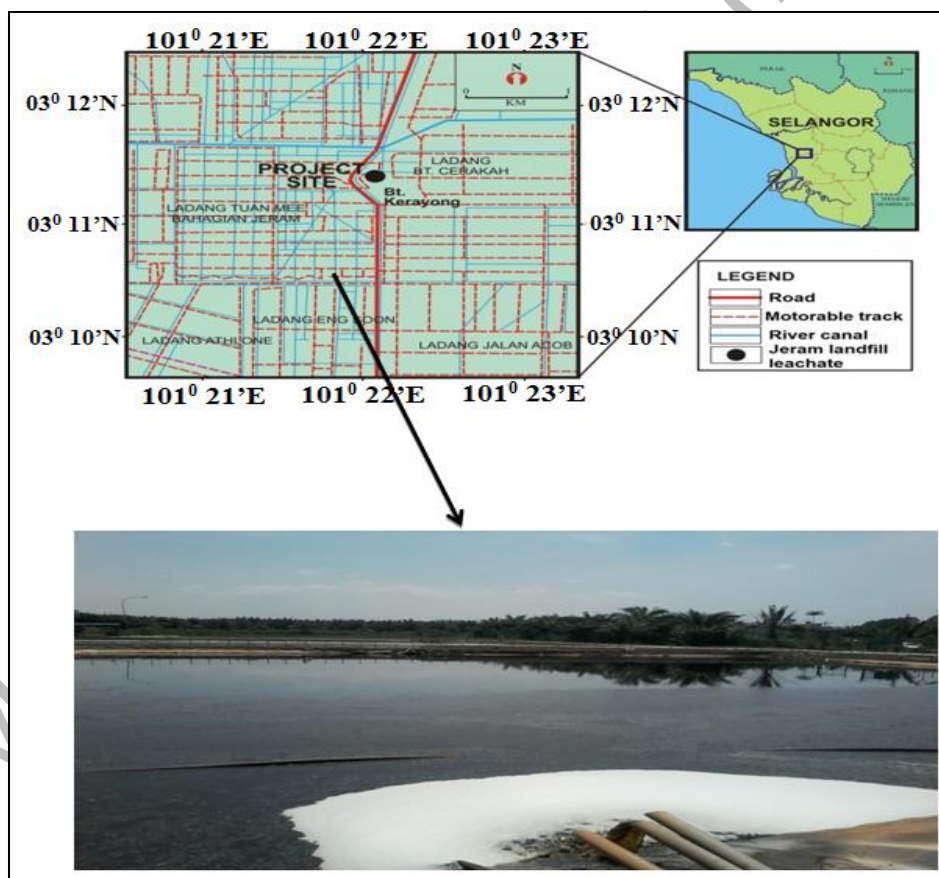


Figure 2. Map to describe location area

Method extraction of Prazosin and Simvastatin

Solid phase extraction procedure used in this study has been described in our previous paper [7]. In summary, the Oasis HLB cartridges (3 cm³, 60 mg) were preconditioned with 2 mL MTBE, 2 mL of MeOH and 2 mL of deionized water at a flow rate of 1 mL/min. After the conditioning step, an aliquot of 250 mL of sample (after biological and charcoal treatment) were loaded into the cartridge. In case of raw leachate, 10 mL was diluted to 250 mL with deionized water because of its high complexity. Samples were passed through the cartridges at a flow rate of 9.0 mL/min and then, rinsed with 2 mL of deionized water prior to elution. After that, the cartridges were vacuum dried for 25 min to remove excess water. The pharmaceutical compounds were subsequently eluted into 12 mL glass tubes by sequentially passing 5×1 mL MTBE, 2×1 mL acetone–MeOH (21:9, v/v), and 3×1 mL acetone–MeOH (9:21, v/v). The combined eluents were evaporated to dryness under a gentle stream of N₂ gas. Dry extracts were reconstituted with 500 µL MeOH–DIW (10:90, v/v) and then transferred to 250 µL deactivated glass insert with polymer feet inserted in amber glass vials from Agilent Technologies (USA). The extract (30 µL) was automatically injected into LC–ESI–TOF/MS system for analysis.

The LC analysis was performed using a Dionex Ultimate 3000/LC 09115047 (USA) system equipped with a vacuum degasser, a quaternary pump, an auto sampler and a UV-Vis diode array detector. Chromatography was performed on a Thermo Scientific C18 (250 mm × 2.1 mm, i.d.: 5 µm) column. The injection volume was 30 µL. Simvastatin and prazosin were analysed in positive ion (PI) mode and eluted off from the column using mobile phase consisting of (A) 0.1 % FA in DIW and (B) ACN–MeOH (3:1, v/v) at 0.3 mL/min. The elution started at 5 % B and was then linearly increased to 60 % B over 3 min, further increased to 97 % B for 3 min and then kept isocratic for 5 min. Next, the elution was returned to its starting conditions over 11.1 min and allowed to equilibrate for 5 min prior to the next run.

The mass spectrometry was carried out on a TOF instrument (Bruker/Germany) equipped with a Z-spray electrospray interface. The results were obtained with the following settings: MS capillary voltages, 4000/3500 (PI/NI); collision energy for prazosin and simvastatin, 10 eV; drying-gas flow rate, 8.0 L/min; drying gas temperature, 190 °C; set capillary, 4000 V; set end plate offset –500 V; set collision cell RF, 250 Vpp and nebuliser pressure, 4.0 bar. Two adduct ions, namely [M+H]⁺ for prazosin and [M+Na]⁺ for simvastatin, were observed using TOF/MS analysis in positive-ion mode. The TOF results were collected between *m/z* 50 – 600. All analytes were acquired using an independent reference spray via the LockSpray interference to ensure accuracy and reproducibility; mixture of sodium hydroxide and formic acid was used as the lock mass *m/z* 90.9766 – 974.8132. The accurate mass was calculated using software Daltonic Analysis incorporated in the instrument.

Quality control

Recoveries of the studied pharmaceuticals were determined by initially spiking the samples with a standard mixture of prazosin and simvastatin (10 µg/L). Six replicates of samples were then enriched using Oasis HLB SPE. Instrumental quantification limits (IQLs) are defined as the lowest concentration with a signal to noise ratio (S/N) of 10. This parameter was estimated by analyzing the standard of decreasing concentration. The LOQ was calculated based on the level of IQLs spiked in each compound using Equation (1), as reported by Vieno et al. [16].

$$LOQ = \frac{IQL \times 100}{Rec (\%) \times CF} \quad (1)$$

where IQL is the instrumental quantification limit (ng/L), Recovery (%) is the absolute recovery of the analyte at the IQL spiking level in the corresponding matrix, and CF is the concentration factor (1000).

Selectivity of the proposed method was investigated by analyzing the chromatograms obtained from the individual standards, standard mixture, and solvent. Robustness of the method was studied by changing the flow rate of mobile phases (0.29 – 0.31 mL/min), location of instrument (Lab1 and Lab2), and volume of injection (10 – 40 µL).

Results and Discussion

Quality control analysis

Table 1 shows the linearity, limit of quantification (LOQ), instrumental quantification limit and recovery of prazosin and simvastatin obtained using the developed method.

Table 1. Method validation parameters

Compound	Linearity Range (µg/L)	Equation	R ²	IQL (µg/L)	LOQ ^a µg/L	LOQ ^b µg/L	R% ^c
PRZ	1.5 – 3000	Y = 2311.4X – 2485	0.999	3.5	2.1	3.5	66
SMV	0.8 – 125	Y = 14930.1X – 49270	0.997	1.5	0.5	2.4	62

^a Deionized water, ^b STP effluent, ^c Recovery using STP effluent

It was observed that same retention time was obtained under all the conditions, indicating that the method was robust (Table 2). Thus, it was reliable to perform for analysis of real samples especially high complexity such as leachate samples.

Table 2. Effect of injection volume, lab movement and mobile phase on the robustness of LC method

Figure of Merit	Value	PRZ	SMV
Volume injection (µL)	10 µL	6.95	11.57
	20 µL	6.97	11.58
	30 µL	6.96	11.56
	40 µL	6.95	11.58
Instrument place	Lab1	6.95	11.59
	Lab2	6.93	11.57
Flow rate (mL/min)	0.29	7.11	11.87
	0.30	6.94	11.58
	0.31	6.76	11.29
	Mean	6.95	11.58
	SD	0.09	0.15
	RSD%	1.3	1.4

Lab 1 and Lab 2: Instrument has been moved from place to place.

TOF screening and confirmation

Measuring environmental contaminants in complex matrices is difficult because the analyte signals can be altered by interferences that are present in the real sample together with analytes. To increase the selectivity of TOF measurements, a narrow accurate mass interval was used to reconstruct the chromatographic traces. Extracted ion chromatograms (XICs) were typically extracted using a 20 mDa mass window for prazosin and simvastatin (Figure 3).

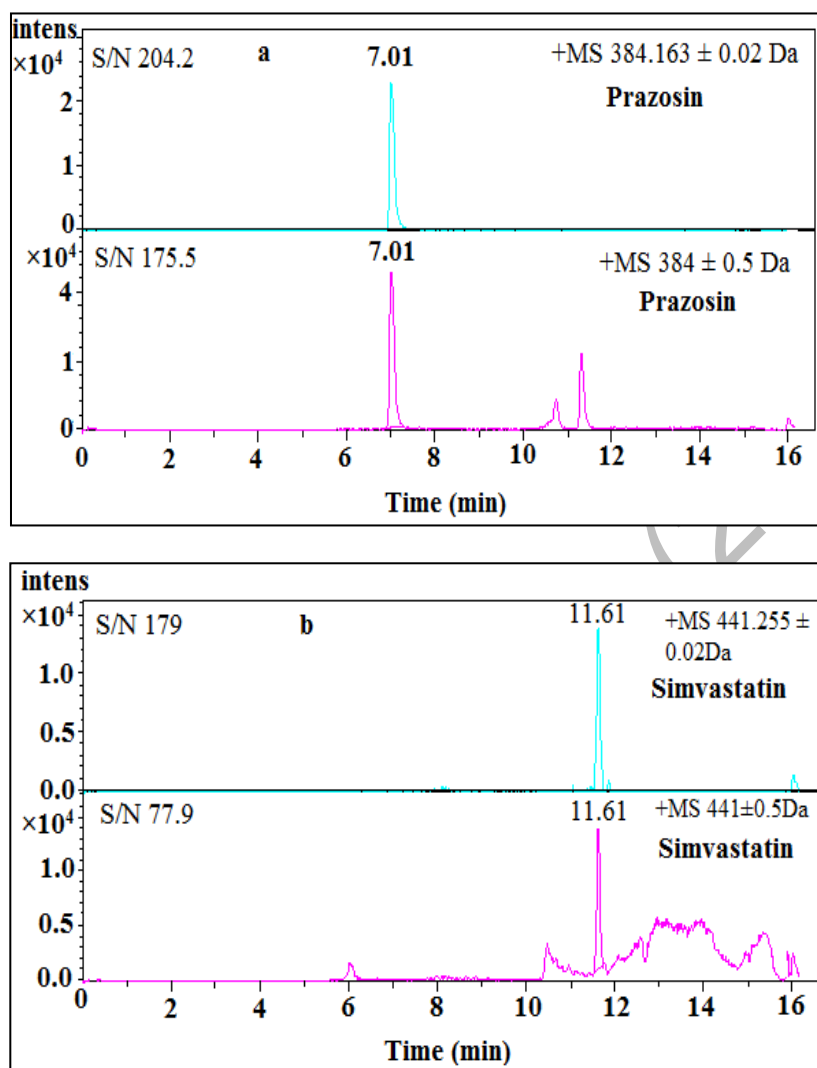


Figure 3. Enhanced selectivity of the LC-TOF/MS analysis corresponding to reconstruct ion chromatogram of (a) prazosin (m/z 384) and (b) simvastatin (m/z 441) in leachate sample with varying mass windows

Accurate mass data for the molecular ions were processed using Bruker Daltonics Data Analysis software, which provided the elemental formula and mass errors (i.e. differences between the accurate masses and the theoretical values), prazosin was selected as an example (Figure 4). The exact mass measurements and mass errors obtained in the TOF mode for molecular ions are listed in Table 3. The errors obtained were 1.56 and 0.2 ppm for prazosin and simvastatin, respectively.

Analysis of prazosin and simvastatin in real samples

The proposed method was applied to real samples to determine prazosin and simvastatin in raw leachate, post-biological and post-charcoal adsorption treatment leachate. Prazosin and simvastatin were detected and quantified in the raw leachate and treated leachate. Prazosin was commonly used for treatment of hypertension, symptomatic benign prostatic hyperplasia, and severe congestive heart failure [17]. It was detected in surface water and wastewater in the previous study conducted by Al-Qaim et al. [5]. In this study, prazosin was found in raw leachate at relatively high concentration 3850 ng/L while it was detected in leachate samples after biological and charcoal

treatment at concentration 98 and 94 ng/L, respectively which is observed less concentration compared with raw leachate 40 fold-times. It showed that prazosin was persistent as it can be detected after treatment even at low concentration as shown in Figure 5.

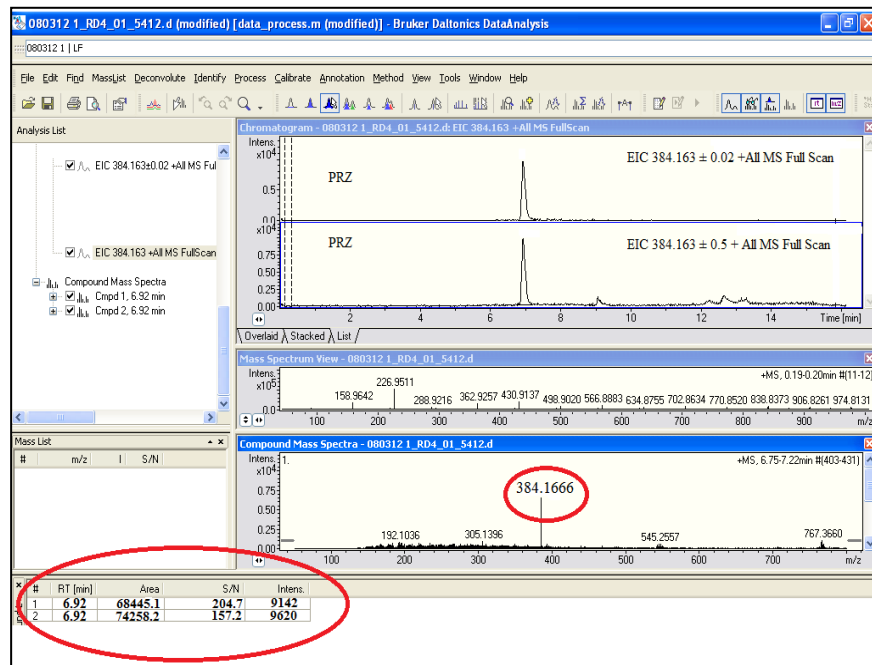


Figure 4. Daltonic data analysis software of prazosin

Table 3. Retention times and accurate mass measurements of molecular ions of target compounds in a standard solution

Peak No.	Compound	Ret. (min)	Elemental Composition	Experimental Mass (m/z)	Theoretical Mass (m/z)	Error (mDa)	Error (ppm)
1	PRZ	6.95	$[M+H]^+$ $C_{19}H_{22}N_5O_4$	384.1660	384.1666	0.6	1.56
2	SMV	11.59	$[M+Na]^+$ $C_{25}H_{38}NaO_5$	441.2611	441.2612	0.1	0.2

Simvastatin being used in the treatment of primary hypercholesterolemia and it is effective in reducing total and LDL-cholesterol as well as plasma triglycerides and apolipoprotein B [17]. Previously, it was detected in surface water, effluent sewage treatment plants and hospital in Malaysia [7]. Finding study indicates that high concentration of simvastatin (415 ng/L) was detected in raw leachate sample. Other compartment such as biological and physico-chemical (charcoal adsorption) treatments were able to reduce the concentration of samvastatin to 12 and 10.4 ng/L, respectively. However, detection of simvastatin and prazosin in raw leachate may be due to disposal direct of these compounds as a solid form. In the light of these results, the biological and charcoal adsorption treatment processes are insufficient to remove these two compounds as they were detected in treated leachate as well as surface water.

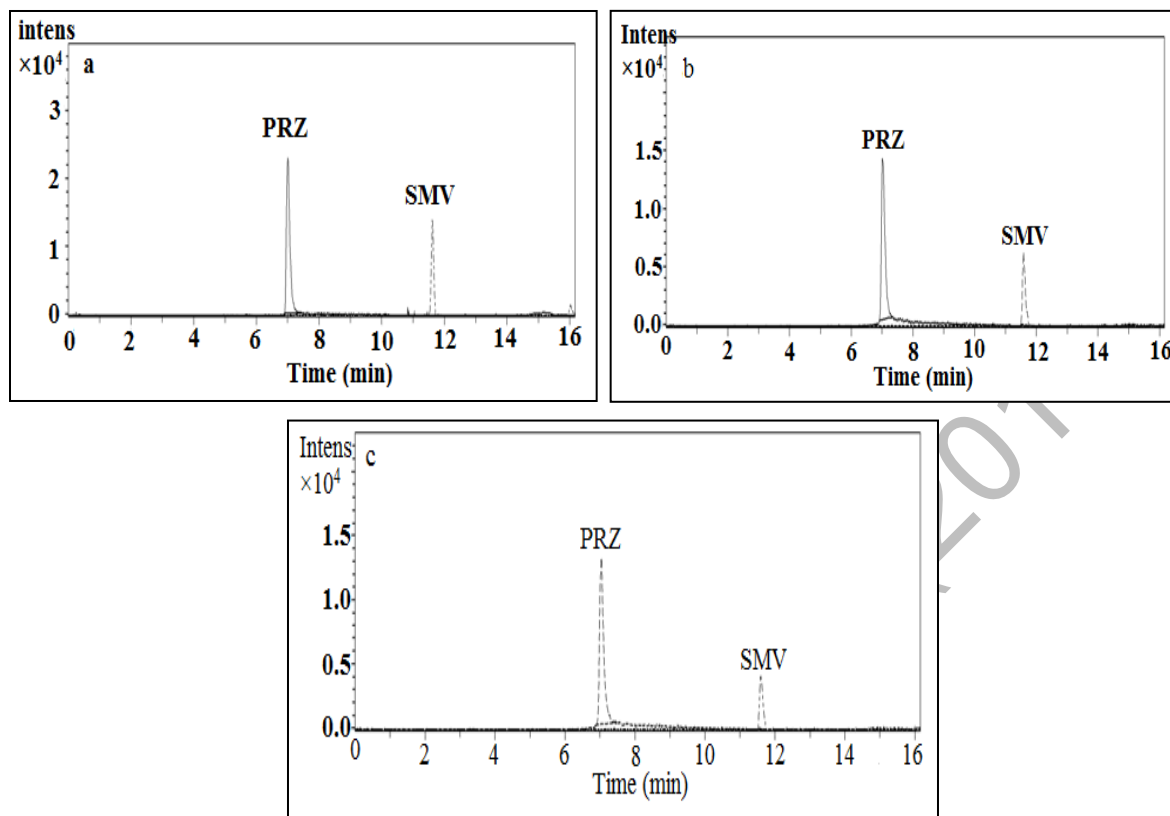


Figure 5. Extracted ionic chromatogram (EIC in PI mode) for prazosin and simvastatin in (a) raw leachate, (b) sample leachate post biological treatment and (c) sample leachate post charcoal adsorption.

Conclusion

The occurrence of prazosin and simvastatin in the leachate after biological and physico-chemical treatments showed that the difficulties are involved in treating this type of samples. Prazosin was persistent compounds as it can be detected after treatment even at low concentration. The detection of trace amounts of prazosin and simvastatin in complex sample indicated that LC-TOF/MS instrument is a powerful technique and very accurate for the analysis pharmaceuticals in water samples.

Acknowledgement

The authors thank Mr. Alefee for providing the LC-TOF/MS facilities to perform this study and the ALIR staff for providing ultra-pure water and facilities for leachate sampling. Special thanks to the staff of Jeram sanitary landfill company for given the permission in collecting leachate samples. This work was financially supported by UKM-DLP-2012-024, UKM-AP-2011-21, BKP-FST-K001671 and FRGS-1-2013-ST01-UKM-01-1.

References

1. Moldovan, Z. (2006). Occurrences of pharmaceutical and personal care products as micropollutants in rivers from Romania. *Chemosphere*, 64 (11): 1808 – 1817.
2. Koreje, K. O., Demeestere, K., Wispelaere, P., Vergeynst, L., Dewulf, J. and Langenhove, H. V. (2012). From multi-residue screening to target analysis of pharmaceuticals in water: Development of a new approach based on magnetic sector mass spectrometry and application in the Nairobi river basin, Kenya. *Science of the Total Environment*, 437: 153 – 164.

3. Petrović, M., Škrbić, B., Živančev, J., Ferrando-Climent, L. and Barcelo, D. (2014). Determination of 81 pharmaceutical drugs by high performance liquid chromatography coupled to mass spectrometry with hybrid triple quadrupole-linear ion trap in different types of water in Serbia. *Science of the Total Environment*, 468-469: 415 – 428.
4. Al-Odaini, N. A., Zakaria, M. P., Yaziz, M. I., Surif, S. and Abdulghani, M. (2013). The occurrence of human pharmaceuticals in wastewater effluents and surface water of Langat river and its tributaries, Malaysia. *International Journal of Environmental Analytical Chemistry*, 93 (3): 245 – 264.
5. Al-Qaim, F. F., Abdullah, M. P., Othman, M. R., Latip, J. and Afiq, W. M. (2013). Development of analytical method for detection of some pharmaceuticals in surface water. *Tropical Journal of Pharmaceutical Research*, 12 (4): 609 – 616.
6. Al-Qaim, F. F., Abdullah, M. P., Othman, M. R., Latip, J. and Afiq, W. (2014). A validation method development for simultaneous LC-ESI-TOF/MS analysis of some pharmaceuticals in Tangkas river-Malaysia. *Journal of the Brazilian Chemical Society*, 25 (2): 271 – 281.
7. Al-Qaim, F. F., Abdullah, M. P., Othman, M. R., Latip, J. and Zakaria, Z. (2014b). Multi-residue analytical methodology-based liquid chromatography-time-of-flight-mass spectrometry for the analysis of pharmaceutical residues in surface water and effluents from sewage treatment plants and hospitals. *Journal of Chromatography A*, 1345: 139 – 153.
8. Gómez, M. J., Petrović, M., Fernández-Alba, A. R. and Barceló, D. (2006). Determination of pharmaceuticals of various therapeutic classes by solid-phase extraction and liquid chromatography-tandem mass spectrometry analysis in hospital effluent wastewaters. *Journal of Chromatography A*, 1114 (2): 224 – 233.
9. Joseph, L., Zaib, Q., Khan, I. A., Berge, N. D., Park, Y. G., Saleh, N. B. and Yoon, Y. (2011). Removal of bisphenol A and 17 α -ethinyl estradiol from landfill leachate using single-walled carbon nanotubes. *Water Research*, 45 (13): 4056 – 4068.
10. Andrews, W. J., Masoner, J. R. and Cozzarelli, I. M. (2012). Emerging contaminants at a closed and an operating landfill in Oklahoma. *Groundwater Monitoring & Remediation*, 32 (1): 120 – 130.
11. Mohamed, F. F., Abdullah, M. P., Othman, M. R. and Zakeria, Z. B. (2012). SPE-LC-Mass spectrometry analysis for basic pharmaceuticals with different therapeutic classes in aquatic environment. *Journal of Applied Sciences Research*, 8 (4): 2124 – 2132.
12. Al-Qaim, F. F., Abdullah, M. P. and Othman, M. R. (2012). Analysis of different therapeutic classes using liquid chromatography-mass spectrometry in the aquatic environment: a review. *International Journal of Pharmacy and Pharmaceutical Science*, 4: 3 – 11.
13. Al-Odaini, N. A., Zakaria, M. P., Yaziz, M. I. and Surif, S. (2010). Multi-residue analytical method for human pharmaceuticals and synthetic hormones in river water and sewage effluents by solid-phase extraction and liquid chromatography–tandem mass spectrometry. *Journal of Chromatography A*, 1217 (44): 6791 – 6806.
14. Miao, X. S. and Metcalfe, C. D. (2003). Determination of cholesterol-lowering statin drugs in aqueous samples using liquid chromatography–electrospray ionization tandem mass spectrometry. *Journal of Chromatography A*, 998 (1): 133 – 141.
15. Jeram Landfill. Access online <http://fishguy85.blogspot.my/2012/12/jeram-landfill.html> in February 2013.
16. Vieno, N. M., Tuhkanen, T. and Kronberg, L. (2006). Analysis of neutral and basic pharmaceuticals in sewage treatment plants and in recipient rivers using solid phase extraction and liquid chromatography-tandem mass spectrometry detection. *Journal of Chromatography A*, 1134 (1-2):101 – 111.
17. Drugbank. Open Data Drug and Drug Target Database. Access online <http://www.drugbank.ca/> in November 2014.